

# FINISHES

## Vetri



## Metalli



## Laccati



## Melaminici



## Essenze Legno



## Personali



## Rivestimenti



Un processo di  
è la realizzazione  
Le collezioni Doim  
che ha reso pro  
Materiali qualit  
abbinamenti m  
le fondamenta  
collezioni Doim

**DOIM OFFICE**  
designfordesign



# FINITURE

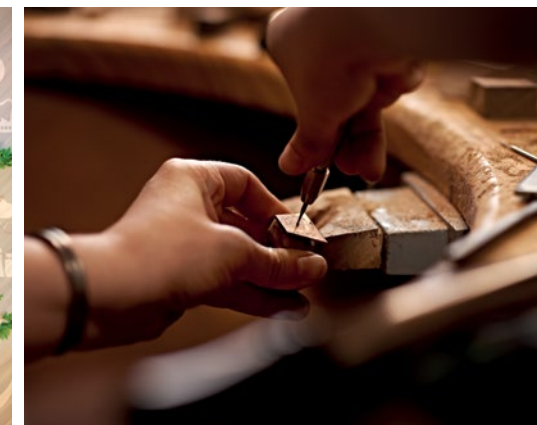
## Finishes



The mark of responsible forestry  
**RICHIEDI I PRODOTTI CERTIFICATI FSC®**

UN PROCESSO DI PROGETTUALITÀ E RICERCA IL CUI OBIETTIVO È LA REALIZZAZIONE DI SISTEMI DI ARREDO INNOVATIVI E UNICI. LE COLLEZIONI DOIMOFFICE SONO ESPRESSIONE DI UN " ITALIAN STYLE " CHE HA RESO POSSIBILE L' INTERNAZIONALIZZAZIONE DEL PROPRIO BRAND. MATERIALI QUALITATIVAMENTE SUPERIORI, LAVORAZIONI ATTENTE E PRECISE, ABBINAMENTI MATERICI E CROMATICI, TECNOLOGIA E RAZIONALITÀ, SONO LE FONDAMENTA SU CUI SI BASA L'IDEAZIONE DELLE COLLEZIONI DOIMOFFICE.

It's a project and research process to realize innovative and unique furniture systems. doimoffice collections are expression of an "italian style" that has made possible internationalization of its own brand. materials are qualitatively superior, manufacturing is careful and accurate; chromatic matching, technology and rationality are the principles of doimoffice collections.





**ESSENZE DI LEGNO EXECUTIVE**  
EXECUTIVE WOOD SPECIES

**PIANI TOPS**    **CONTENITORI / MOBILI SERVIZIO** CABINETS / SERVICE UNITS



NOCE CANALETTO NATURALE



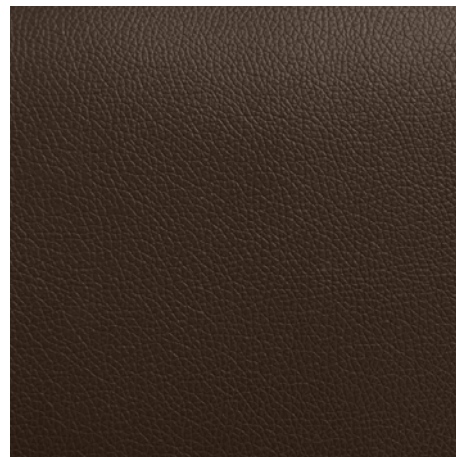
NOCE CANALETTO RED



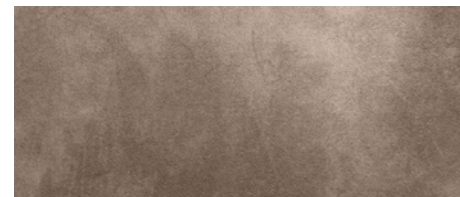
NOCE CANALETTO BLACK



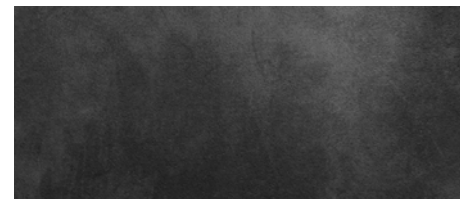
ECOPELLE NERA / BLACK ECOLEATHER



ECOPELLE MARRONE / BROWN ECOLEATHER



SCAMOSCIATO MARRONE / BROWN VELVET LEATHER

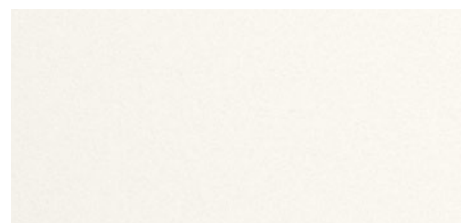


SCAMOSCIATO NERO / BLACK VELVET LEATHER





MELAMINICI  
MELAMINE



BIANCO



TITANIO



TORTORA



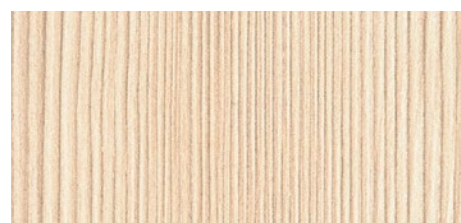
TIRRENO



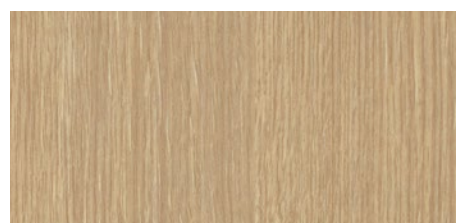
FANGO



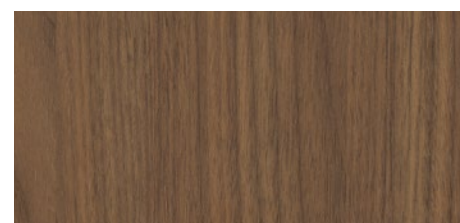
GRIGIO CEMENTO (SOLO ANTE E RIPIANI 18 mm.)



LARICE



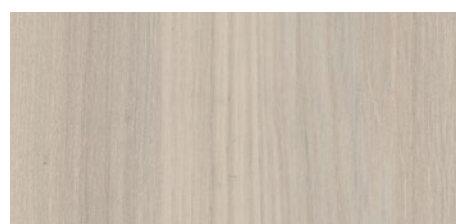
ROVERE MIELE



NOCE AMERICANO



ALASKA (OLMO)



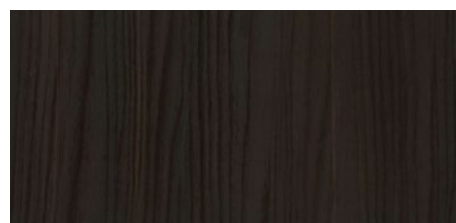
AMBRA (OLMO)



ANDORRA (OLMO)



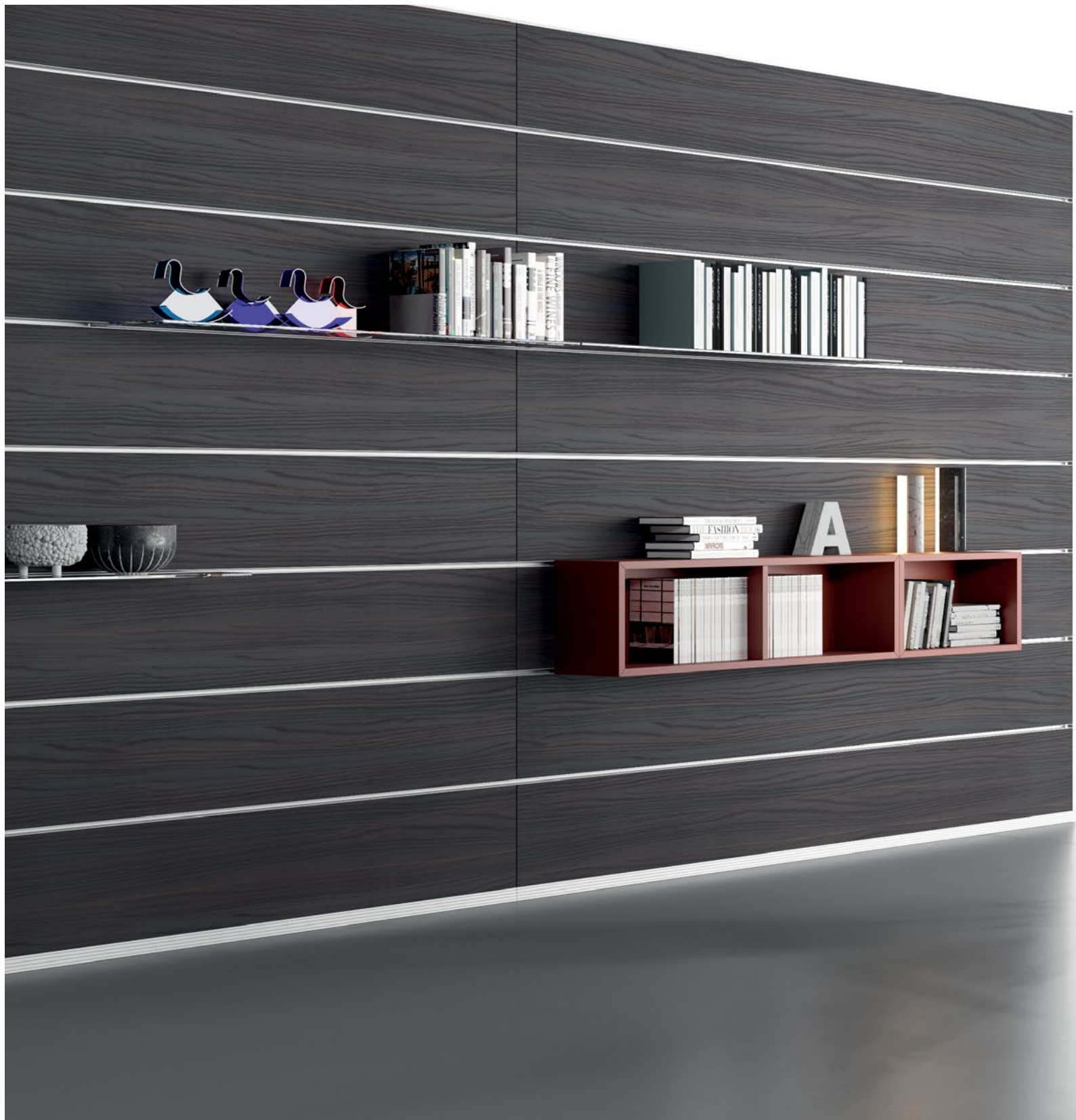
AFRICA (OLMO)



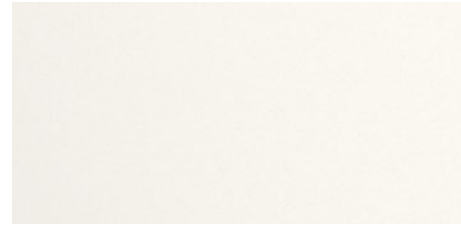
TESTA DI MORO (OLMO)



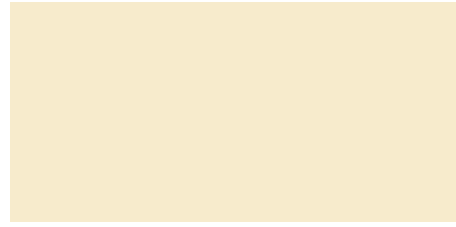




LACCATO OPACO  
MATT LACQUERED



BIANCO



MAGNOLIA



ORZO



ZAFFERANO



ARANCIO



PASSION



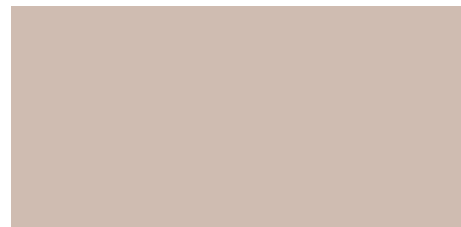
RAME



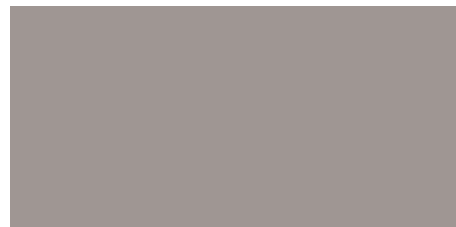
ALOE



TORTORA



ORCHIDEA



GRAFITE



TITANIO



TIRRENO



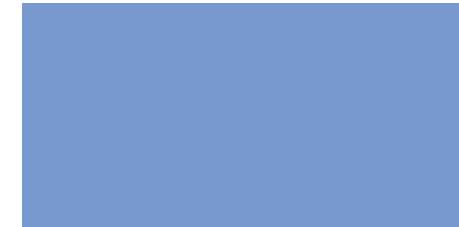
ANTRACITE



CIELO



BLU



AVIO



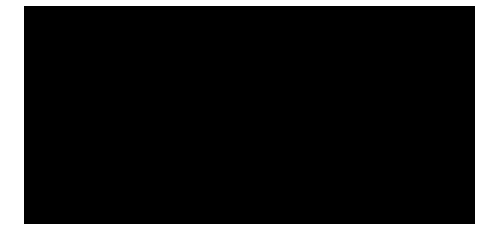
OCEANO



CACAO



FANGO



NERO

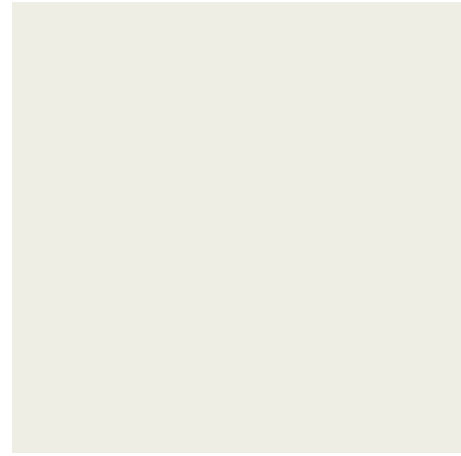




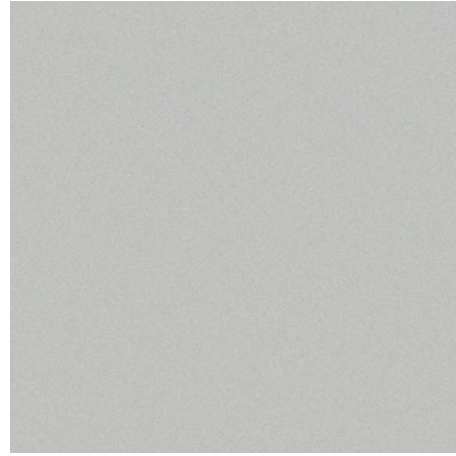


**STRUTTURE METALLICHE**  
METALS DESK FRAMES

TEST, KEY, BASIC 2



BIANCO

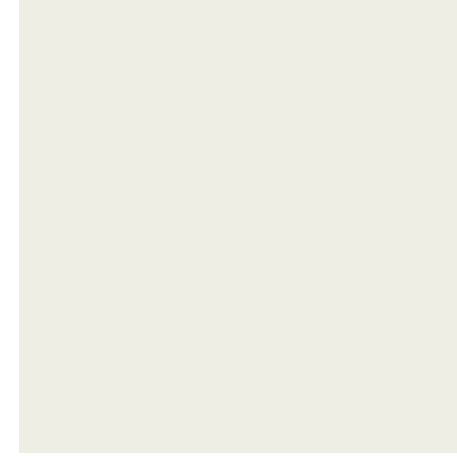


GRIGIO ALLUMINIO

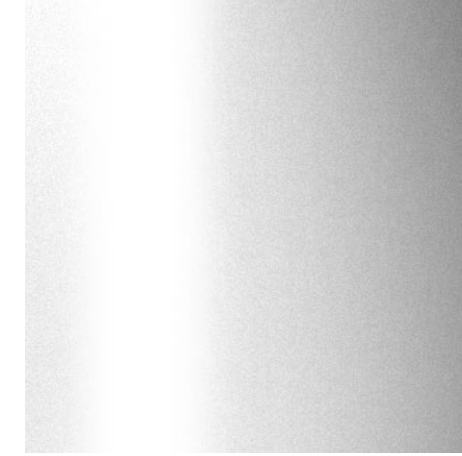


ANTRACITE

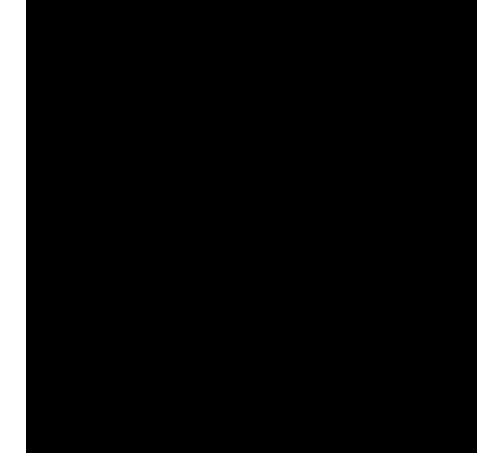
ALA (IN ALLUMINIO)



BIANCO

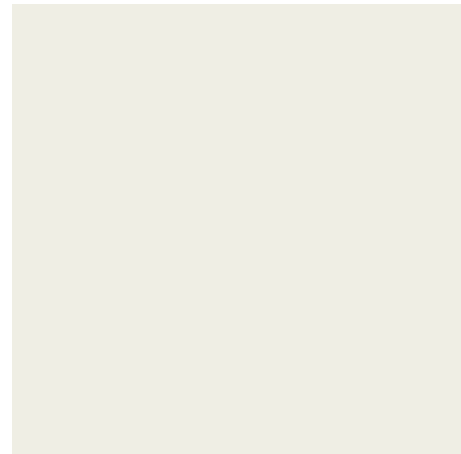


ALLUMINIO ANODIZZATO

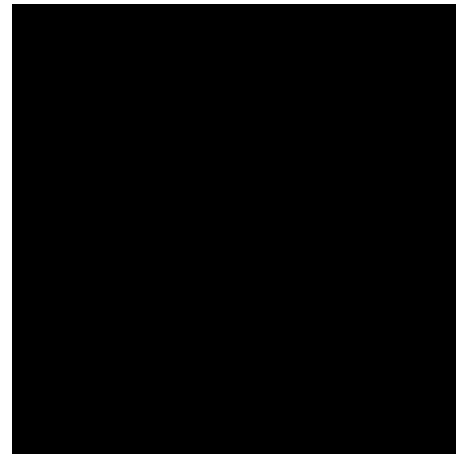


NERO

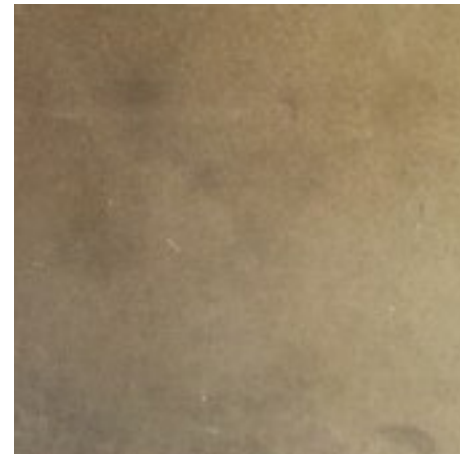
ELLE



BIANCO

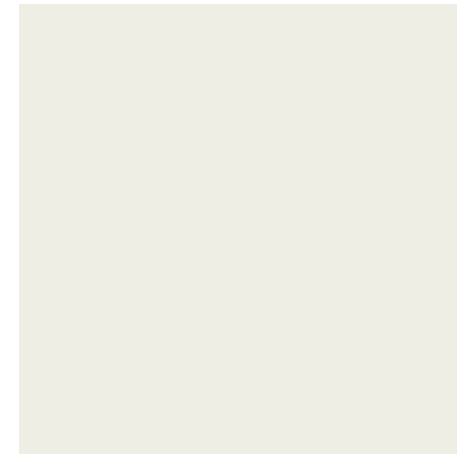


NERO

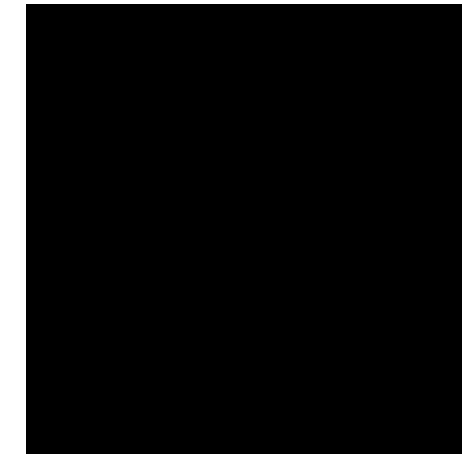


ACCIAIO BRUNITO

IRON



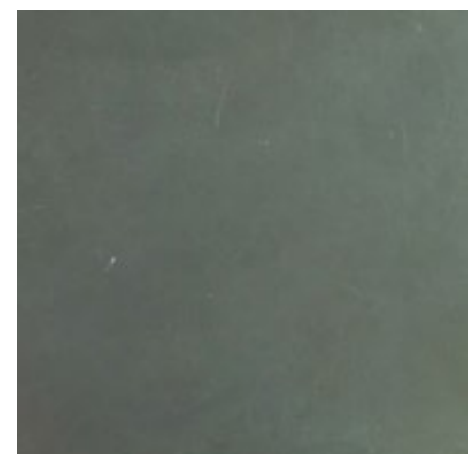
BIANCO



NERO



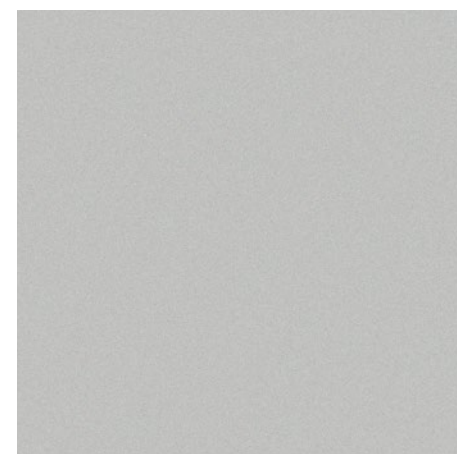
CROMO



ACCIAIO NATURALE



CROMO



GRIGIO ALLUMINIO

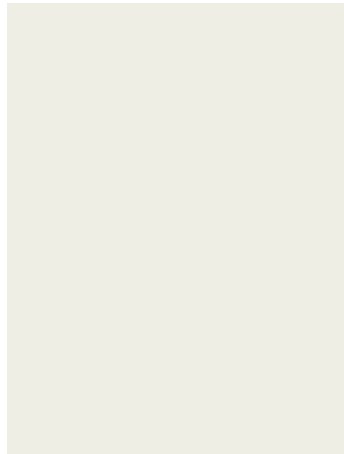




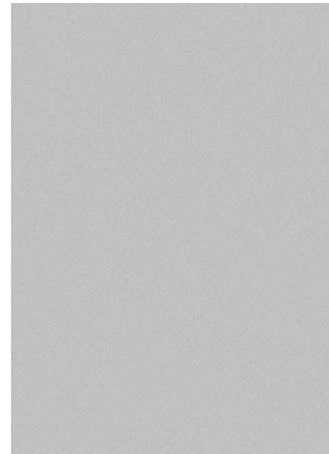




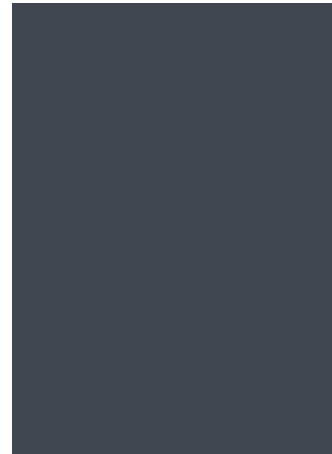
**CASSETTIERE** METAL DRAWER PACKS  
TEST, KEY, BASIC, BASIC 2, IRON, MOOD



BIANCO



ALLUMINIO

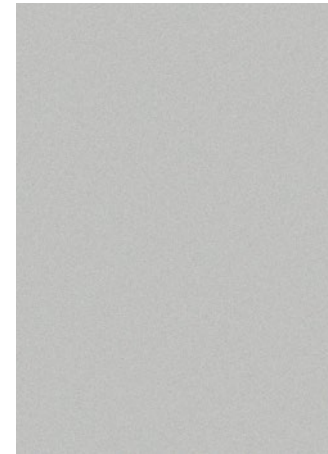


ANTRACITE



NERO

**TELAI VETRATI PARETE** GLASS FRAMES FOR SILENCE

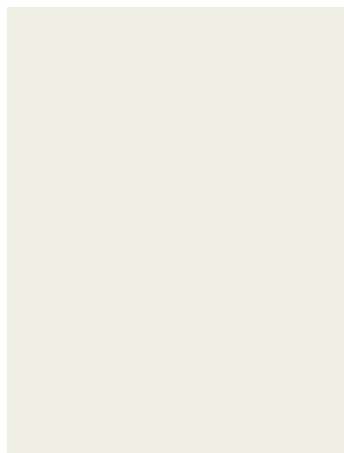


ALLUMINIO ANODIZZATO



ALLUMINIO ANODIZZATO LUCIDO

**ACCESSORI** ACCESSORIES  
TEST, KEY, BASIC, BASIC 2



BIANCO



ALLUMINIO



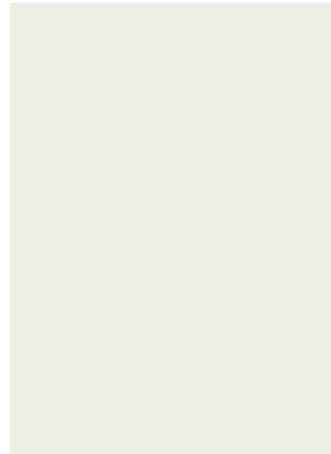
ANTRACITE



ROSSO RUBINO



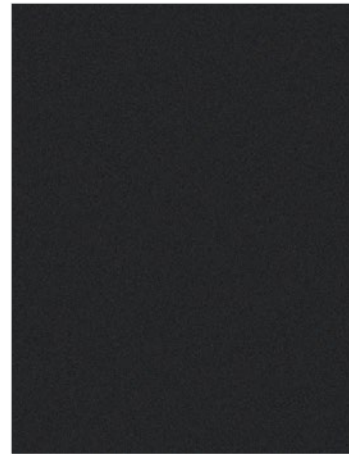
**TELAI VETRATI PARETE** GLASS FRAMES FOR LIGHT



ALLUMINIO ANODIZZATO BIANCO

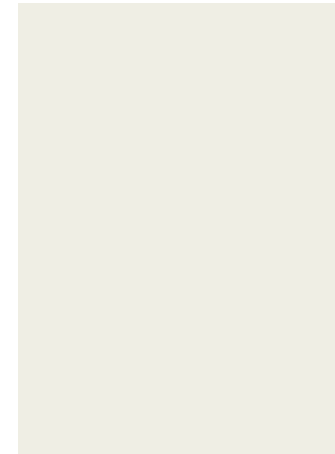


ALLUMINIO ANODIZZATO



ALLUMINIO ANODIZZATO NERO

**TELAI VETRATI PARETE** GLASS FRAMES FOR WALL SYSTEM, LINE, SPACE



ALLUMINIO VERNICIATO BIANCO



ALLUMINIO VERNICIATO ALLUMINIO

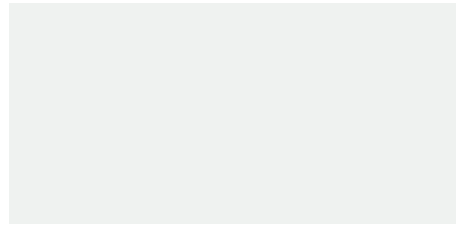




**PIANI VETRO EXECUTIVE** EXECUTIVE GLASS TOPS  
ALA, IRON, ELLE



NERO



BIANCO



ARANCIO



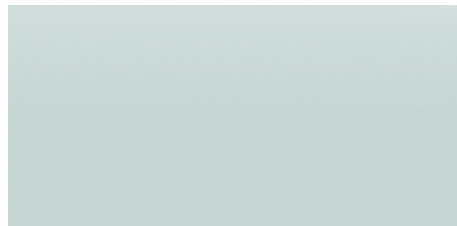
ROSSO



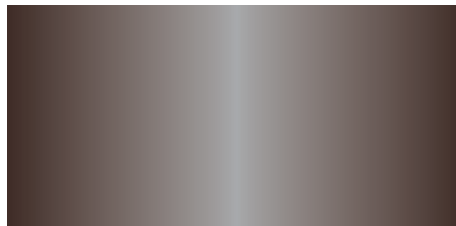
VERDE



BLU OLTREMARE



ACIDATO\*

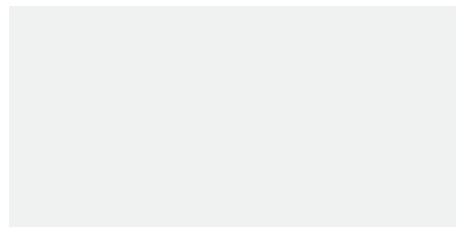


FUMÈ\*

**PIANI VETRO OPERATIVE** OPERATIVE GLASS TOPS  
TEST, KEY



NERO



BIANCO

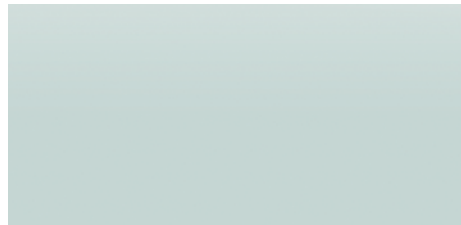


GRIGIO ALLUMINIO

\* ANCHE PER MOOD / ALSO FOR MOOD



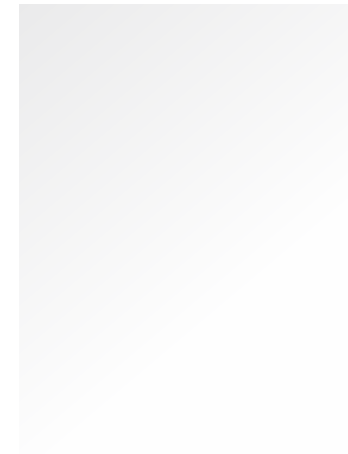
**MENSOLE E SCHERMI** SHELVES AND SCREEN PANELS  
TEST, KEY, BASIC, INSERTO GAMBA BASIC 2



ACIDATO



**ANTE CONTENITORI** CABINET DOORS FILE, OPEN, DOX  
**PARETE** WALL SILENCE, SPACE, LINE



TRASPARENTE



ACIDATO

**SERIGRAFIE PERSONALIZZATE** GLASS SURFACE WALLS  
PARETI SILENCE, SPACE, LINE



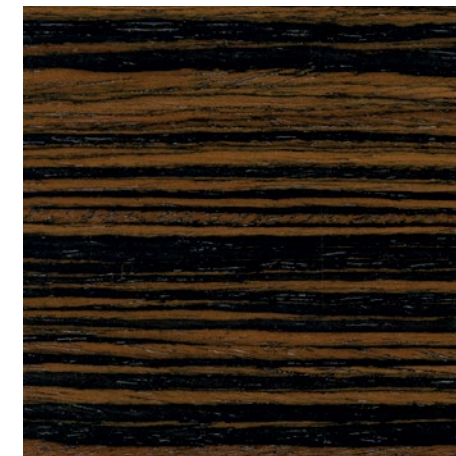
IL VETRO OLTRE CHE ELEMENTO ARCHITETTONICO, IN FASE PROGETTUALE, SI PUÒ PERSONALIZZARE ATTRAVERSO SERIGRAFIE E APPLICAZIONI DI DECORO CHE AGGIUNGONO AL MODULO UN CARATTERE MEDIATICO.

GLASS IS AN ARCHITECTURAL ELEMENT THAT CAN BE CUSTOMIZED AT THE PLANNING STAGE, USING SCREEN PRINTING AND DECORATIVE APPLICATIONS THAT ADD A COMMUNICATIVE TOUCH TO THE MODULES.

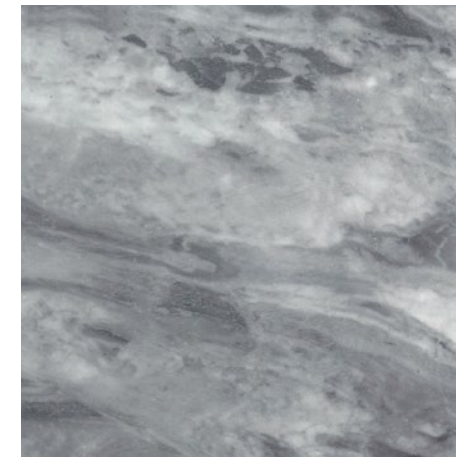
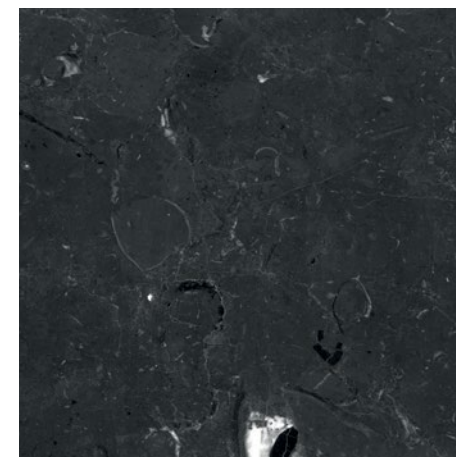
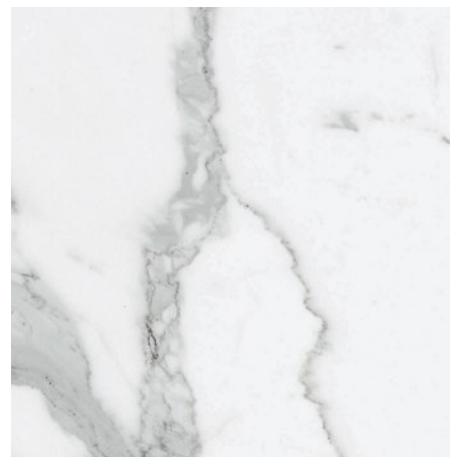




**DECORATIVO EFFETTO LEGNO PERSONALIZZATO**  
CUSTOMIZED DECORATED WOOD EFFECT



**DECORATIVO EFFETTO MARMO PERSONALIZZATO**  
CUSTOMIZED DECORATED MARBLE EFFECT

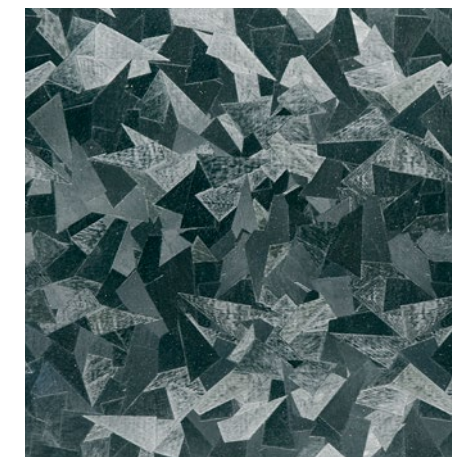
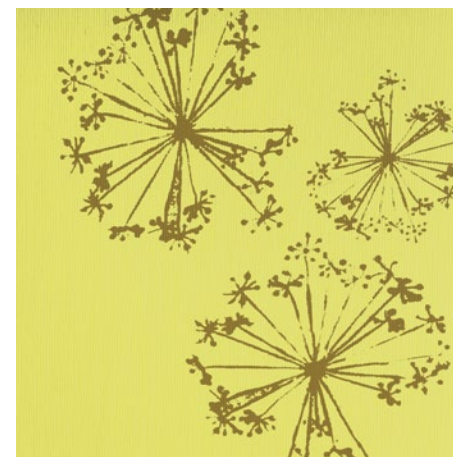


ESEMPI DI DECORO: È POSSIBILE ESEGUIRE DECORATIVI SU PROGETTO / EXAMPLES OF DECORATION: DECORATIVE MOTIFS CAN BE PROVIDED TO SPECIFICATIONS.





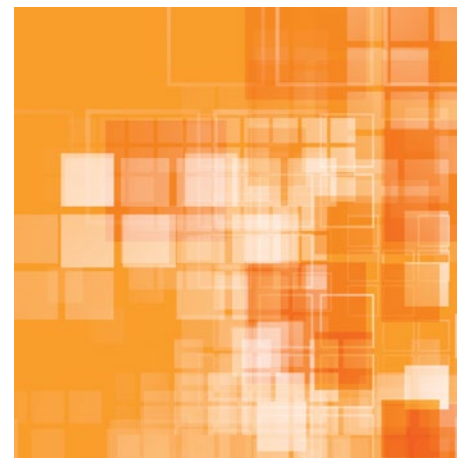
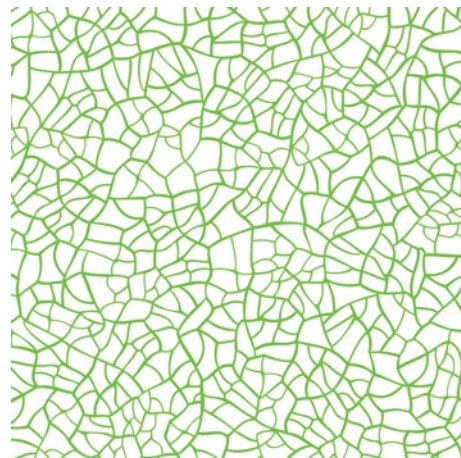
**PERSONALIZZAZIONI**  
CUSTOMIZATIONS



ESEMPI DI DECORO: È POSSIBILE ESEGUIRE DECORATIVI SU PROGETTO / EXAMPLES OF DECORATION: DECORATIVE MOTIFS CAN BE PROVIDED TO SPECIFICATIONS.



**VETRO STRATIFICATO CON TESSUTO PERSONALIZZATO**  
CUSTOMIZED LAYERED GLASS WITH FABRIC



LA PARETE PUÒ ESSERE PERSONALIZZATA UTILIZZANDO VETRI OTTENUTI INSERENDO INNUMEREVOLI TIPI DI MATERIALI (FOTOGRAFIE, RETI SOTTILI, CARTA, TESSUTI, PELLICOLE IN POLIESTERE ECC.) TRASPARENTI, SEMI-TRASPARENTI O COPRENTI. QUESTI MATERIALI SONO INSERITI TRA UN VETRO E L'ALTRO CON UNA TECNICA CHE ADOTTA UN SISTEMA SOTTOVUOTO, CHE PERMETTE L'ACCOPPIAMENTO E LA LAMINAZIONE. IL VETRO COSÌ ACCOPPIATO E STRATIFICATO GARANTISCE MASSIMA SICUREZZA E QUALITÀ. IL TESSUTO PUÒ ANCHE ESSERE FORNITO DAL CLIENTE, LASCIANDO COSÌ UN'AMPIA POSSIBILITÀ DI PERSONALIZZAZIONE IN BASE ALLE ESIGENZE D'ARREDO.

WALLS CAN BE CUSTOMIZED USING TRANSPARENT, SEMI-TRANSPARENT OR OPAQUE GLASS COMBINED WITH SEVERAL TYPES OF MATERIAL (PHOTOGRAPHS, FINE MESH, PAPER, FABRIC, POLYESTER FILM, ETC.). THESE MATERIALS ARE INSERTED BETWEEN TWO GLASS SHEETS WITH A VACUUM TECHNIQUE THAT COUPLES AND LAMINATES THE DOUBLE LAYERED GLASS AND GUARANTEES MAXIMUM SAFETY AND QUALITY. THE FABRIC MAY ALSO BE PROVIDED BY THE CUSTOMER FOR A BESPOKE SOLUTION TO MEET SPECIFIC NEEDS.



DOIMOFFICE  
designfordesign

COORDINATION: ARCH. SERGIO LION  
CONCEPT / GRAPHIC DESIGN: WWW.WALTERFOGALE.IT  
PRINTING: SILEAGRAFICHE  
OCTOBER 2017



DOIMOFFICE divisione di DOIMO CITYLINE s.r.l.  
VIALE EUROPA UNITA, 12  
MORIAGO DELLA BATTAGLIA - 31010 TREVISO  
ITALY  
TEL. +39 0438 897788  
[www.doimoffice.com](http://www.doimoffice.com)